

3200 3201 3202 3203 / SLIM SLOT XL

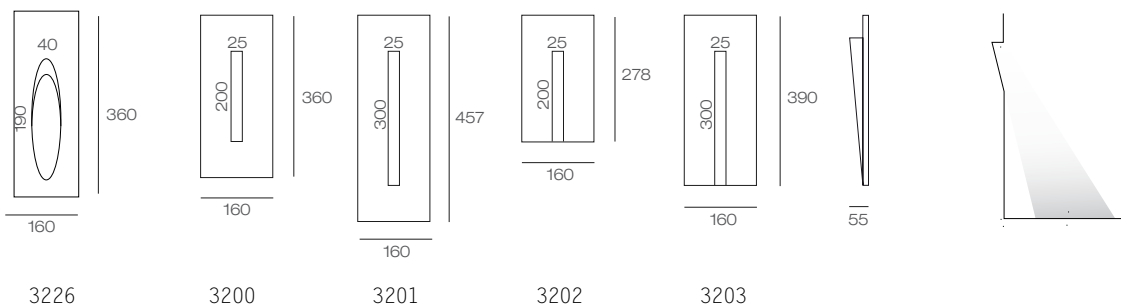
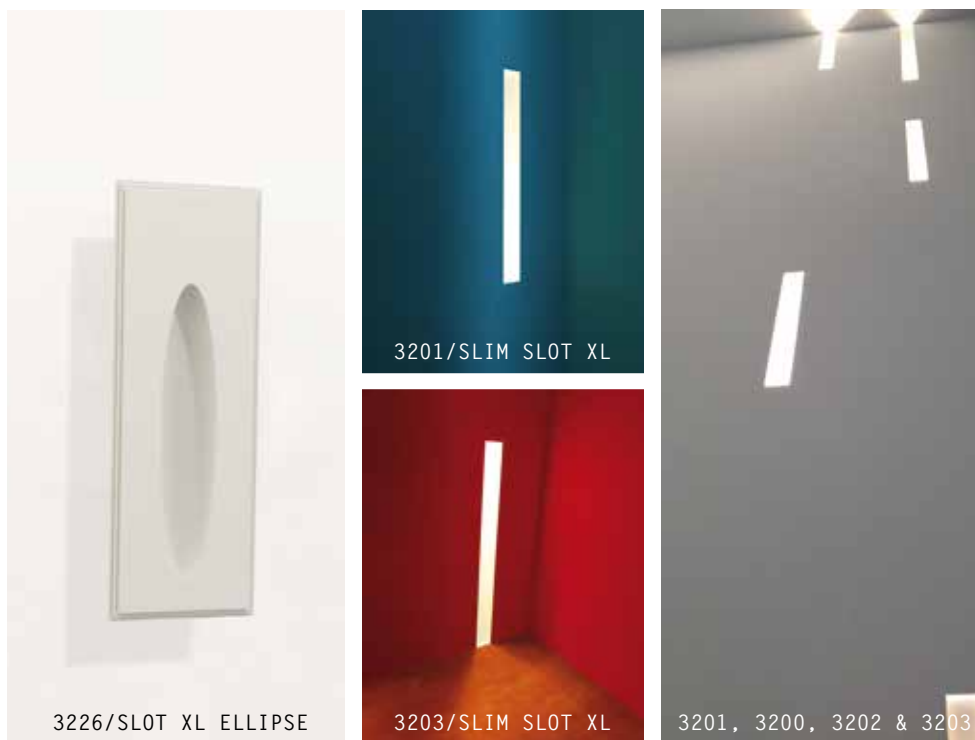


# SLIM SLOT XL

design Atelier Sedap

Encastrés en plâtre HD pour 2 LEDs high power. Slim Slot XL est une gamme d'épaisseur 55 mm spécialement adaptée aux cloisons en plaque de plâtre.

*High strength plaster recessed fittings, equipped with 2 high power 350mA LEDs, especially designed for plasterboard walls (55 mm deep).*



3200, 3201, 3202, 3203 & 3226 SLIM SLOT XL Design Atelier Sedap

RÉFÉRENCE	SOURCES	⬇	POIDS
3200_WW3	2 700 °K / 2 LEDs highbrightness / 350mA / 2 W / 264 lm ou 500mA / 3 W / 320 lm		2 KG
3201_WW3	2 700 °K / 2 LEDs highbrightness / 350mA / 2 W / 264 lm ou 500mA / 3 W / 320 lm		2 KG
3202_WW3	2 700 °K / 2 LEDs highbrightness / 350mA / 2 W / 264 lm ou 500mA / 3 W / 320 lm		2 KG
3203_WW3	2 700 °K / 2 LEDs highbrightness / 350mA / 2 W / 264 lm ou 500mA / 3 W / 320 lm		2 KG
3226_WW3	2 700 °K / 2 LEDs highbrightness / 350mA / 2 W / 264 lm ou 500mA / 3 W / 320 lm		2 KG
011030097	Alimentation LED dimmable 1-10V ou Push Dim multi-amp (12V / 10 W)		
011030103	Alimentation LED non-dimmable multi-amp (350mA / 15 W ou 500mA / 20 W)		

Sur demande : DALI

# SLOT XL

design Atelier Sedap



Encastrés en plâtre HD pour 2 LEDs high power. Slot est une gamme d'épaisseur 50 mm spécialement adaptée aux cloisons en plaque de plâtre.

*High strength plaster recessed fittings, equipped with 2 high power 350mA LED, especially designed for plasterboard walls (50 mm deep).*



3031/SLOT XL1



3030/SLOT XL2



3029/SLOT XL3



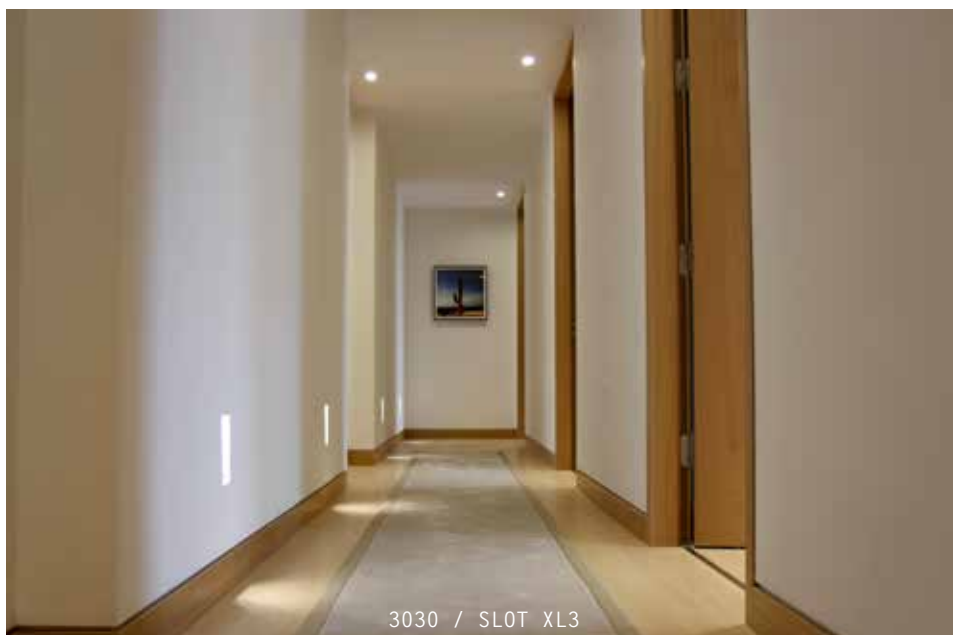
3041/SLOT XL4



3042/SLOT XL5



3030 / SLOT XL3

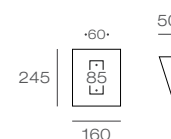


3030 / SLOT XL3

### 3031 SLOT XL1 Design Atelier Sedap

RÉFÉRENCE	SOURCES	⬇	1,0 KG
3031_WW3	2 700 °K / 2 LEDs highbrightness / 350mA/2 W/ 264 lm ou 500mA/3 W/320 lm / Circuit / Dimmable (1-10V ou PushDim)		
011030097	Alimentation LED dimmable 1-10V ou Push Dim multi-amp (12V / 10 W)		
011030103	Alimentation LED non-dimmable multi-amp (350mA / 15 W ou-500mA / 20 W)		

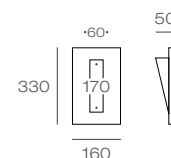
Sur demande : DALI



### 3030 SLOT XL2 Design Atelier Sedap

RÉFÉRENCE	SOURCES	⬇	1,6 KG
3030_WW3	2 700 °K / 2 LEDs highbrightness / 350mA/2 W/264 lm ou 500mA/3 W/320 lm / Circuit / Dimmable (1-10V ou PushDim)		
011030097	Alimentation LED dimmable 1-10V ou Push Dim multi-amp (12V / 10 W)		
011030103	Alimentation LED non-dimmable multi-amp (350mA / 15 W ou-500mA / 20 W)		

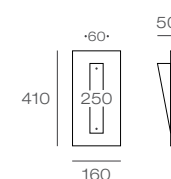
Sur demande : DALI



### 3029 SLOT XL3 Design Atelier Sedap

RÉFÉRENCE	SOURCES	⬇	2,0 KG
3029_WW3	2 700 °K / 2 LEDs highbrightness / 350mA/2 W/264 lm ou 500mA/3 W/320 lm / Circuit / Dimmable (1-10V ou PushDim)		
011030097	Alimentation LED dimmable 1-10V ou Push Dim multi-amp (12V / 10 W)		
011030103	Alimentation LED non-dimmable multi-amp (350mA / 15 W ou-500mA / 20 W)		

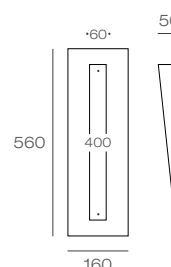
Sur demande : DALI



### 3041 SLOT XL4 Design Atelier Sedap

RÉFÉRENCE	SOURCES	⬇	2,0 KG
3041_WW3	2 700 °K / 2 LEDs highbrightness / 350mA/2 W/264 lm ou 500mA/3 W/320 lm / Circuit / Dimmable (1-10V ou PushDim)		
011030097	Alimentation LED dimmable 1-10V ou Push Dim multi-amp (12V / 10 W)		
011030103	Alimentation LED non-dimmable multi-amp (350mA / 15 W ou 500mA / 20 W)		

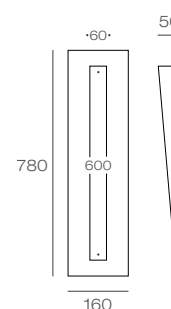
Sur demande : DALI



### 3042 SLOT XL5 Design Atelier Sedap

RÉFÉRENCE	SOURCES	⬇	3,3 KG
3042_WW3	2 700 °K / 2 LEDs highbrightness / 350mA/2 W/264 lm ou 500mA/3 W/320 lm / Circuit / Dimmable (1-10V ou PushDim)		
011030097	Alimentation LED dimmable 1-10V ou Push Dim multi-amp (12V / 10 W)		
011030103	Alimentation LED non-dimmable multi-amp (350mA / 15 W ou 500mA / 20 W)		

Sur demande : DALI



Plus d'informations et photométrie sur [sedap.com](http://sedap.com) / More data and photometry available at [sedap.com](http://sedap.com)